

CEMETERIES OF HARTFORD, OXFORD COUNTY, MAINE

25-year update of Bedford's 30 JUNE 1996 "Cemeteries Vol I & 2"
(transcription of Hartford town records)
Compiled by Jane Adams and Judy Adams Hamilton
1 September, 2022

This update is based on:

*Richard E. Bedford's Cemeteries of Hartford, Maine,
vfthomas.com Hartford ME cemeteries,
Surveyance of the graves in the following cemeteries:*

Blake Cemetery

Fuller/Bear Mountain Cemetery

Glover Cemetery

Hartford Center Cemetery

Howard/Ricker/Warren Cemetery

Jackson Cemetery

Maple Grove Cemetery

Meeting House Hill/Gurney Hill /Starbird Cemetery

Parsons Cemetery

Poland Family Cemetery

Sparrow Cemetery

Swan Pond Cemetery

Thompson/Poland Corner Cemetery;

FindAGrave.com memorials and grave photos for all cemeteries in Hartford, including:

Marble Cemetery

Nadeau Family Cemetery

Soule Cemetery, and

Additional research on Ancestry.com as needed

We started with the 1996 published data collected and compiled by Richard E. Bedford [referred to as “town records” in this work] and data from the Maine Cultural History Project of V. F. Thomas Co. (www.vfthomas.com) for Hartford. A database has been developed of all marked (and unmarked, where possible) graves found in 2021-22 in a total of sixteen cemeteries in Hartford. Thirteen cemeteries were personally surveyed to record those gravestones found, and all sixteen cemeteries have been updated with photos and memorials on www.findagrave.com [FaG]. Our work, as well as the Bedford and vfthomas data, are “transcriptions” from several sources and, therefore, inevitably could contain errors.

The pages that follow contain directions, internet URLs for Find a Grave and in some case Google Earth photos of the sixteen cemeteries and an abbreviated alphabetical record of all graves in Hartford, Maine. Each grave record gives the cemetery location, birth and death dates, inscriptions from the stones, parents, spouse/s and veteran status. Data found on a gravestone takes precedence in this record and additional information found is followed by an asterisk (*). Surnames for mothers and wives in each record should be her *maiden* name and in italics. Photos of gravestones and memorials can be found on each cemetery site on www.findagrave.com.

There is more information in the database for many of these records. If you have questions, find errors needing correction, want an individual record emailed to you, and/or you have more data to add, please contact the Hartford Town Office Hartford@megalink.net. We will make every effort to keep our data accurate, up to date and fulfill all requests.

Collected and compiled in 2021-22 by:
Jane Adams
Judy *Adams* Hamilton

Graves alphabetically listed by Surname in hartfordcemeteries.pdf that follows:

A - P. 1	I - P. 102	R - P. 147
B - P. 13	J - P. 106	S - P. 160
C - P. 46	K - P. 109	T - P. 176
D - P. 60	L - P. 112	V - P. 196
E - P. 71	M - P. 121	W - P. 197
F - P. 73	N - P. 135	Y - P. 203
G - P. 83	O - P. 136	Z - P. 208
H - P. 89	P - P. 137	

CEMETERIES in HARTFORD, Oxford County, MAINE:



Blake Cemetery:

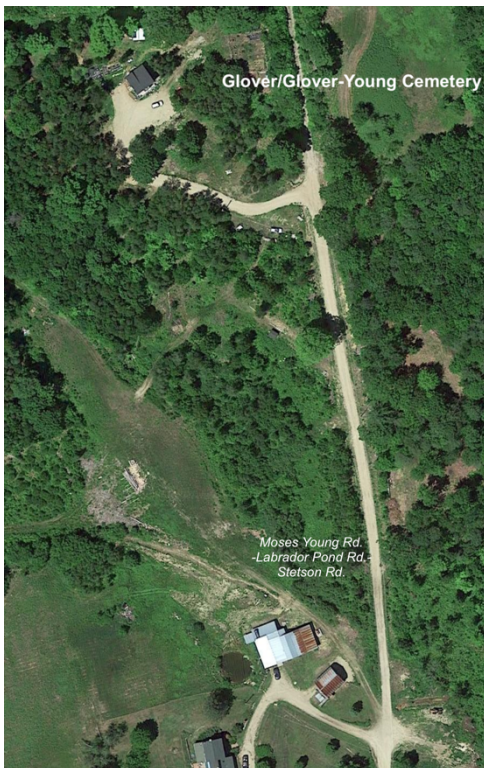
From the intersection of Routes 140 and 219, follow Route 219 east toward Turner, and the cemetery (somewhat obscured by trees within a rock wall) is on the right in a field in 4.7–4.8 miles before an intersection with Harlow Hill Rd. (aka Mud Rd.) on the right.

www.findagrave.com/cemetery/2701196/blake-cemetery

Fuller/Bear Mountain Cemetery *(no picture)*:

Along southeast side of Bear Mtn. Road. Directions: Turn onto Pratt Hill Rd. off Rt. 219, go almost a mile to Four Corners (Mahoney/Berry and Pratt Hill/Bear Mtn Rd intersection). Cemetery is on your right on Bear Mtn Rd.

www.findagrave.com/cemetery/89649/bear-mountain-cemetery



Glover/Glover-Young Cemetery:

From the intersection of Routes 140 and 219, travel north on Route 140 toward Canton approximately 3.7 miles to the intersection on the left with Darrington Road. Turn left onto Darrington Road and immediately turn left again onto Stetson Road, and follow it 2.5–2.6 miles to the intersection on the right with Labrador Pond Road (just before new recently repaired bridge). Turn right onto Labrador Pond Road. Go straight onto Moses Young Rd. when Labrador Pd Rd turns left and the cemetery is on the left in .9–1.0 miles from Stetson Rd.

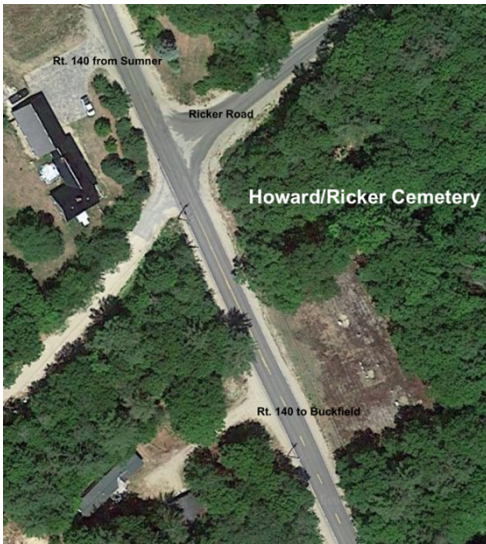
www.findagrave.com/cemetery/89649/bear-mountain-cemetery

Hartford Center Cemetery:

From the intersection of Routes 140 and 219 (by Bim's), follow Route 140 toward Sumner, and the cemetery is on the left in less than 0.1 miles.

www.findagrave.com/cemetery/90025/hartford-center-cemetery





Howard-Ricker-Warren/Ricker Howard Cemetery:

From the intersection of Routes 140 and 219, travel south on Route 140 through Sumner toward Buckfield, and the cemetery is on the left in 4.3–4.4 miles just after the intersection on the left with Ricker Rd.

www.findagrave.com/cemetery/90085/howard-cemetery

Jackson Cemetery *(no picture)*:

www.findagrave.com/cemetery/2453053/jackson-cemetery

From the intersection of Routes 140 and 219, travel east on Route 219 toward Turner for approximately 2.5 miles to the intersection on the left with Pratt Hill Road. Turn left onto Pratt Hill Road, and the cemetery is on the right in 0.6–0.7 miles.

Maple Grove Cemetery:

Along east side of Church Street between Rt. 219 in Hartford and Staples Hill Rd off Rt. 108 in Canton.

www.findagrave.com/cemetery/90191/maple-grove-cemetery



Marble Family Cemetery *(no picture)*:

On the family farm, north of Swan Pond in Hartford, ME

www.findagrave.com/cemetery/2701476/marble-cemetery

Meeting House Hill/Gurney Hill Cemetery *(no picture)*:

From the intersection of Routes 140 and 219, travel east on Route 219 for less than 0.1 miles to the intersection on the right with Gurney Hill Road. Turn right onto Gurney Hill Road, and the cemetery is on the right in approximately 2.3 miles.

www.findagrave.com/cemetery/2273845/meeting-house-hill-cemetery

Nadeau Family Cemetery *(no picture)*: Directions unknown

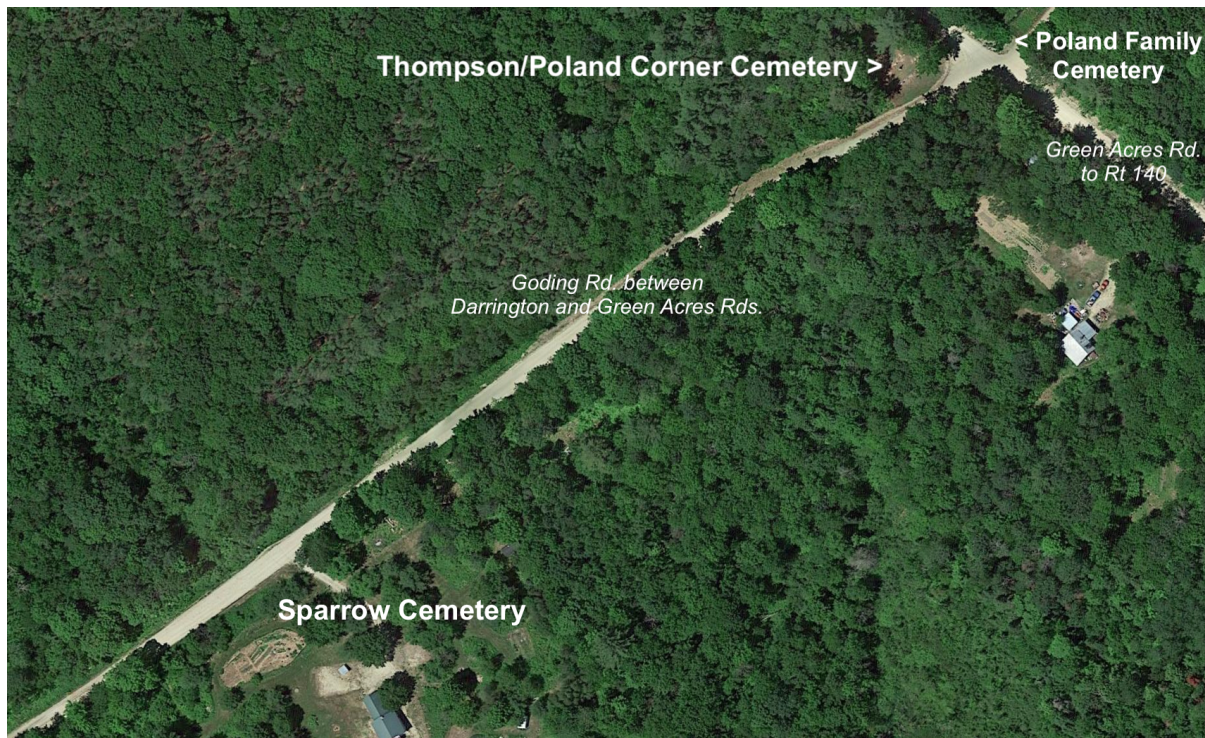
www.findagrave.com/cemetery/2701751/memorial-search#srp-top

Parsons Cemetery *(no picture)*: www.findagrave.com/cemetery/2430047/parsons-cemeter

From the intersection of Routes 140 and 219, travel north on Route 140 toward Canton, and the cemetery is on the left in approximately 2.4 miles.

Soule Cemetery *(no picture)*: www.findagrave.com/cemetery/2607152/soule-cemetery

From the intersection of Routes 140 and 219, travel north on Route 140 toward Canton approximately 3.7 miles to the intersection on the left with Darrington Road. Turn left onto Darrington Road and go straight approximately 2.1 miles to a house at the beginning of the discontinued portion of the Road. Directions from here may be obtained from the landowner.



Sparrow Cemetery (above): Along southeast side of Goding Road. Directions: From Hartford center take Rt. 140 toward Canton, turn left onto Green Acres Rd.; turn left onto Goding Rd.; cemetery on your left. www.findagrave.com/cemetery/2607152/soule-cemetery

Poland Family Cemetery (above):

From the intersection of Routes 140 and 219, travel north on Route 140 toward Canton approximately 4.5 miles to the intersection on the left with Green Acres Road. Turn left onto Green Acres Road, and follow it .4-.5 miles to the intersection on the right with Hermit Lane. The cemetery is ahead and to the right opposite Thompson Cemetery. www.findagrave.com/cemetery/2739251/poland-family-cemetery

Thompson/Oakes/Poland Corner Cemetery (above):

From the intersection of Routes 140 and 219, travel north on Route 140 toward Canton approximately 4.5 miles to the intersection on the left with Green Acres Road. Turn left onto Green Acres Road, and follow it .4-.5 miles to the intersection on the left with Goding Road. The cemetery is ahead and to the left. www.findagrave.com/cemetery/90410/poland-corner-cemetery

Swan Pond Cemetery:

From the intersection of Routes 140 and 219, travel south on Route 140 turning left in East Sumner toward Buckfield and approximately 4.3 miles to the intersection on the left with Ricker Hill Road. Turn left onto Ricker Hill Road and follow it .5-.6 miles to a stop sign. Turn right at the stop sign and go approximately .9 miles to a Y-intersection with Town Line Road. Turn left onto Town Line Road, and follow it .2-.3 miles to the intersection on the left with Swan Pond Road. Turn left onto Swan Pond Road, and the cemetery is on the right in approximately .7 miles.

www.findagrave.com/cemetery/2586904/swan-pond-cemetery

